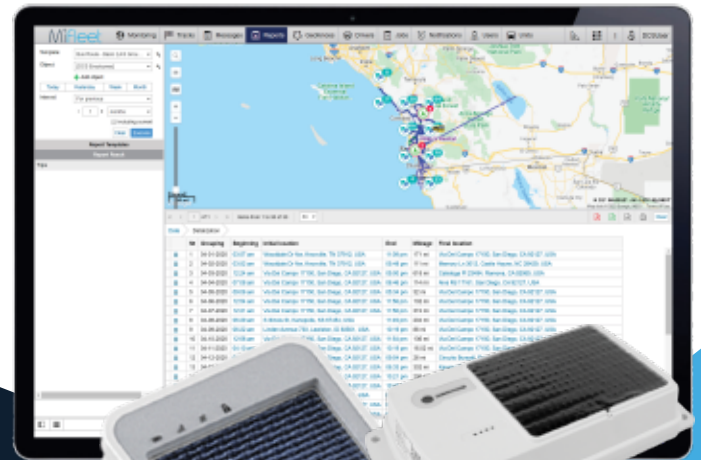




LOCATE ASSETS, REDUCE COSTS & INCREASE ASSET UTILIZATION

Introducing our Solar Powered Asset Tracking Solution relies on GPS technology to pinpoint an asset's location, transmitting the data through cellular or satellite networks to our MiFleet Software. It effectively monitors valuable assets like shipping containers, fleet vehicles, and construction equipment, offering real-time updates on their location, speed, and condition. These solar-powered trackers are both eco-friendly and cost-effective, eliminating the need for constant power and emissions.



FEATURES & BENEFITS

- Real-Time Monitoring**
 Remotely manage your asset with device reporting pings once every 5 minutes while in motion and once every 1 hour when stationary.
- Asset Location Management**
 Monitor the location of your asset & make better decisions based on their location.
- Removal Alerts**
 Alerts sent when device is pulled off from asset.
- Asset Recovery**
 Locate lost or stolen assets or trailers.
- Easy Installation**
 It can be mounted with magnets, screws, polyurethane or heavy duty tape by end users.
- BLE 5.1 for Sensors**
 Compatible with MiFleet's BLE temp & humi sensor MFTSTH1-B, temp & door sensor MFTSDT1-B, wireless relay MFTSR1-B and your own sensors.
- IP67 Waterproof**
 Tested in 5-meter water pressure environment for 15 hrs.



FOR MORE INFORMATION CONTACT:

1-866-616-5587

www.uscellular.com/business/fleetmanagement



SOLAR POWERED ASSET TRACKER

REMOTE ASSET MONITORING IN EXTREME CONDITIONS

USE CASES



CONSTRUCTION

INCREASE ASSET UTILIZATION, REDUCE FUEL CONSUMPTION & PREVENT THEFT

Whether you're on the job site or off, MiFleet has you covered with tailored solutions which monitor your fleet's performance, efficiency and location. With a wide range of device styles and configurations, MiFleet can alert you of excess idling, prevent theft with starter interrupt, calculate engine run time and even alert you of vehicle arrival & departures.



SERVICES & TRADES

LOWER COSTS, INCREASE EFFICIENCY & CUSTOMER SATISFACTION

MiFleet is tailored to assist you in overall cost reduction and increased customer satisfaction. Our reports, alerts and live monitoring of your fleet keeps your business in check, drivers safe and expenses in line, while improving your customer's overall experience with estimated time of arrivals & location sharing.



OIL, GAS & MINING

INCREASE UP-TIME & PROFITABILITY, REDUCE COSTS

Keeping your vehicles and equipment running is your most important responsibility. MiFleet assists in determining predictive maintenance and increases performance of your vehicles & equipment, including generators and pumps. Not to mention, providing you the necessary information to optimize equipment utilization.



UTILITIES

UTILITY EQUIPMENT & PERSONNEL MANAGEMENT

MiFleet assists with the daily management of people, vehicles and other equipment with increased efficiency and productivity in mind. Customize your solution with weather overlays, geofences and points of interest to build your custom network of locations. Respond to outages and emergencies without hesitation, MiFleet provides you insight to more than just your fleet.