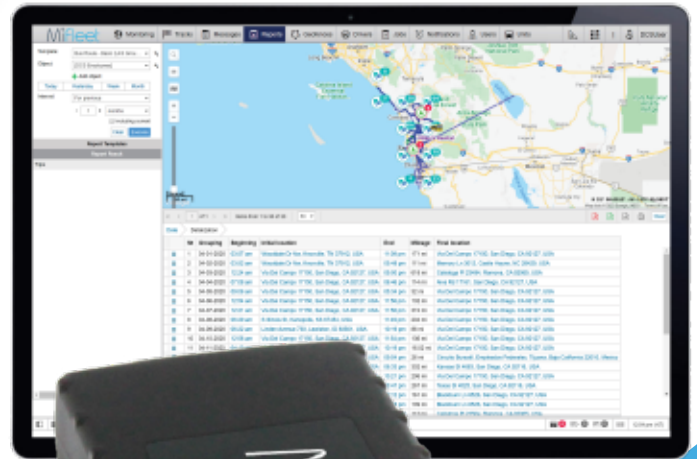




DRIVE DOWN EXPENSES, MAXIMIZE FLEET EFFICIENCY, AND SAFEGUARD YOUR DRIVERS

MiFleet provides instant awareness of your overall fleet performance and productivity. Increase customer satisfaction, lower fuel costs, reduce aggressive driver behavior & increase your bottom line with alerts, notifications, performance reports and vehicle operating information.



FEATURES & BENEFITS

- Real-Time Monitoring**
 Remotely Manage your fleet with accurate up to the minute location information.
- Alerts & Notifications**
 Monitor the location of your asset & make better decisions based on their location.
- Improve Fleet Supervision & Safety**
 Improve driver safety and reduce up to 66% of driving habits that lead to accidents.
- Engine Diagnostics**
 Monitor the operating performance of your vehicles with engine diagnostics and trouble codes (DTCs).
- Geofence Boundaries**
 Customize high frequent delivery & service locations and be alerted when vehicles arrive & depart.
- Lower Fuel Costs**
 Reducing Idle Time and Speeding can improve fuel consumption by up to 13%.



FOR MORE INFORMATION CONTACT:

1-866-616-5587

www.uscellular.com/business/fleetmanagement



HEAVY DUTY

BIG RIG, COMMERCIAL & AGRICULTURAL EQUIPMENT SOLUTION

USE CASES



CONSTRUCTION

INCREASE ASSET UTILIZATION, REDUCE FUEL CONSUMPTION & PREVENT THEFT

Whether you're on the job site or off, MiFleet has you covered with tailored solutions which monitor your fleet's performance, efficiency and location. With a wide range of device styles and configurations, MiFleet can alert you of excess idling, prevent theft with starter interrupt, calculate engine run time and even alert you of vehicle arrival & departures.



COLD CHAIN MANAGEMENT

REDUCE PRODUCT LOSS & CONFIRM TEMPERATURE CONSISTENCY

MiFleet offers continuous, real-time temperature monitoring of your most valuable & perishable cargo. Verify accurate temperature records of all your deliveries. Alerts notify you of temperatures that are out of range due to equipment malfunctions.



DISTRIBUTION

IMPROVE OPERATIONS, LOWER COSTS & STREAMLINE YOUR FLEET

MiFleet provides dock-to-dock fleet management tools and solutions to keep your fleet running efficiently by lowering costs and improving delivery times. Together, we can keep your drivers safe, vehicles maintained and operations running smoothly down to the last mile.



UTILITIES

UTILITY EQUIPMENT & PERSONNEL MANAGEMENT

MiFleet assists with the daily management of people, vehicles and other equipment with increased efficiency and productivity in mind. Customize your solution with weather overlays, geofences and points of interest to build your custom network of locations. Respond to outages and emergencies without hesitation, MiFleet provides you insight to more than just your fleet.