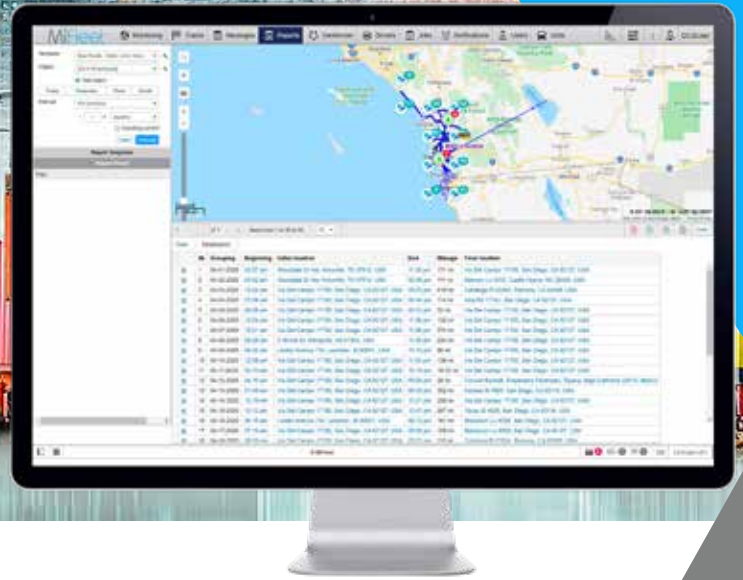




ASSET TRACKER

PALLETS, CONTAINERS, TOOLS, TRAILERS...YOU NAME IT, IF IT'S PORTABLE, WE CAN TRACK IT

MiFleet



BUILT TO GO ANYWHERE AND TRACK EVERYTHING

A truly one-of-a-kind, battery-operated asset tracker designed for multi-year deployments. With its intelligent capabilities to have improved performance for extended life, it is also enabled with an IP67 weatherproof exterior. This solution incorporates internal antennas and simplified installation making it best suited for unpowered assets in extreme and rugged environments.

- Slap'N Track**
Easy to install with either 4 bolts or Magnetic Mounting with a built in Magnet.
- Alerts & Notifications**
Be notified of triggered events such as confirmations, suspicious activity & arrival/departure times.
- Weatherproof**
Weatherproof (IP67), meant for internal and external mounting.
- Long Term Deployment**
Runs on battery for 7 years, never needing replacement.
- Real-Time Monitoring**
Remotely Manage your delivery vehicles with accurate, up to the minute location information.
- Geofence Boundaries**
Customize highly frequente locations and be alerted when vehicles arrive & depart desired location boundry.





ASSET TRACKER

PALLETS, CONTAINERS, TOOLS, TRAILERS...YOU NAME IT, IF IT'S PORTABLE, WE CAN TRACK IT

USE CASES



CONSTRUCTION

INCREASE ASSET UTILIZATION, REDUCE FUEL CONSUMPTION & PREVENT THEFT

Whether you're on the job site or off, MiFleet has you covered with tailored solutions which monitor your fleet's performance, efficiency and location. With a wide range of device styles and configurations, MiFleet can alert you of excess idling, prevent theft with starter interrupt, calculate engine run time and even alert you of vehicle arrival & departures.



SERVICES AND TRADES

LOWER COSTS, INCREASE EFFICIENCY & CUSTOMER SATISFACTION

MiFleet is tailored to assist you in overall cost reduction and increased customer satisfaction. Our reports, alerts and live monitoring of your fleet keeps your business in check, drivers safe and expenses in line, while improving your customer's overall experience with estimated time of arrivals & location sharing.



HEALTHCARE

WORK SMARTER AND FOCUS MORE TIME ON YOUR PATIENTS.

Healthcare workers can spend up to 25% of their time simply searching for equipment. MiFleet provides a standalone asset management platform to allow quick location data of mission critical medical devices. You can easily set a geofence area to give you instant notifications via email or text message that the equipment has left its geofence boundary. Administrative staff will be able to track the location of the equipment for quick device location and recovery.



UTILITIES

UTILITY EQUIPMENT & PERSONNEL MANAGEMENT

MiFleet assists with the daily management of people, vehicles and other equipment with increased efficiency and productivity in mind. Customize your solution with weather overlays, geofences and points of interest to build your custom network of locations. Respond to outages and emergencies without hesitation, MiFleet provides you insight to more than just your fleet.