

MiTrak

MiTrak A Personal Tracking Solution

Get Started Guide

Table of Contents

1.	DOWNLOAD APP	ERROR! BOOKMARK NOT DEFINED.
2.	TURN ON TRACKING	4
3.	ADDITIONAL SEND FEATURES	5
4.	SETTINGS	6
5.	CREATE ADMIN PASSWORD	7
6.	POWER SAVE MODE	8

MITRAK OVERVIEW

MiTrak is an application that allows you to turn your mobile device into a GPS Tracker. It can be installed on mobile devices with Android operation system version 4.1 or later (phones, tablets, netbooks, etc.) equipped with a GPS receiver.

The application is to be used in conjunction with the MiFleet platform solution and requires access to the MiFleet platform. The data about the location is sent from a mobile device to the monitoring server to provide positional data such as coordinates, course, speed, images, alarm messages, custom states, service, and text messages. All data can be reviewed directly on the MiFleet platform.

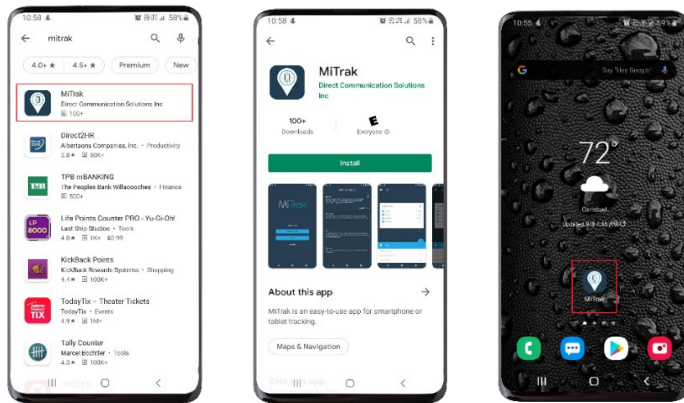
The data received from the mobile device can be later processed by the monitoring system and presented to the user.

DOWNLOAD APP

MiTrak can be installed for

Apple - <https://itunes.apple.com/gb/app/mitag/id1177638301?mt=8>

Android - <https://play.google.com/store/apps/details?id=com.dcs.mitag&hl=en>

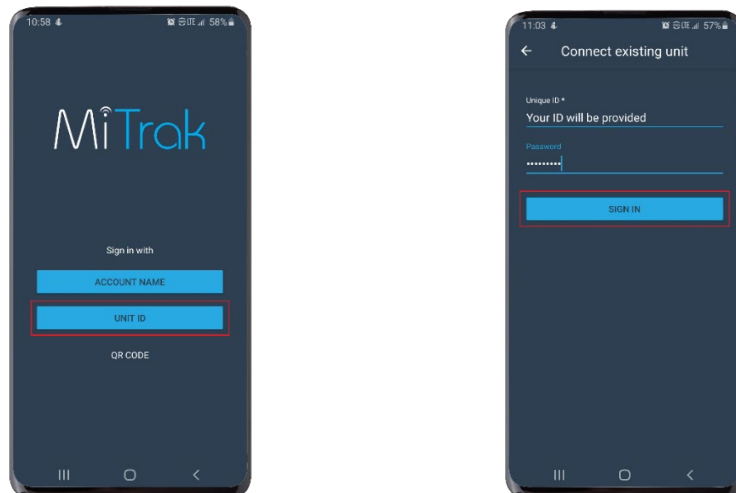


Open App.

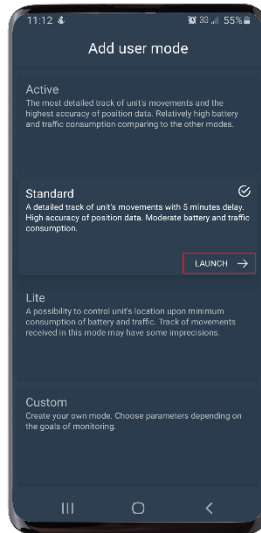
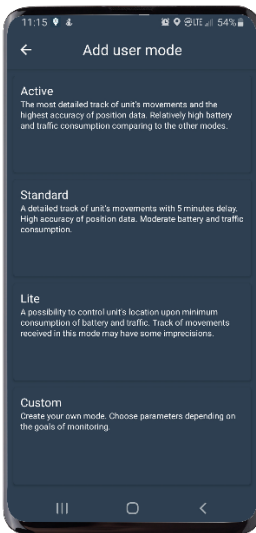
Select Unit ID, enter

Username = 10-digit phone number

Password will be provided in a Welcome Email, if you do not have or forget, contact us at fleetsupport@mifleet.us



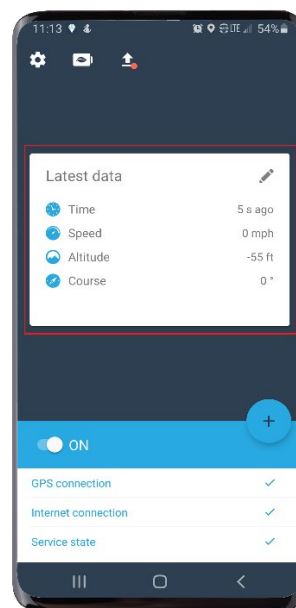
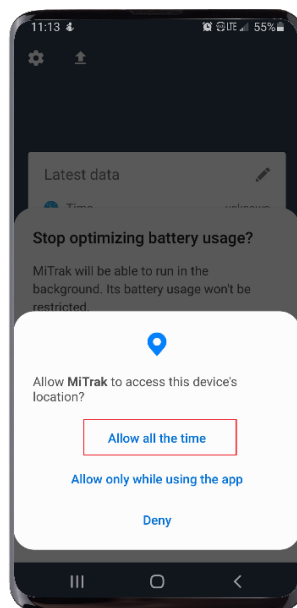
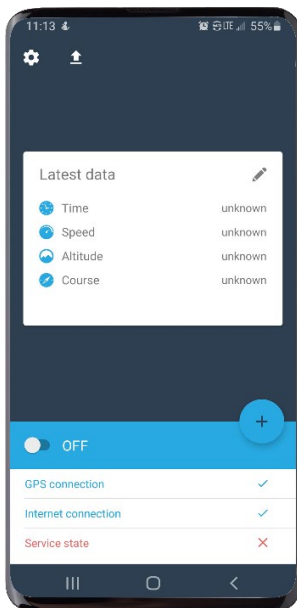
Once logged in, select a device reporting interval. This can be changed later if need be.



Click launch to continue.

TURN ON TRACKING

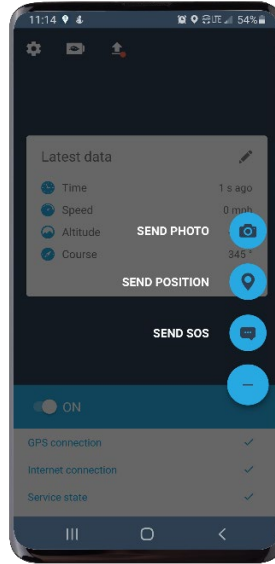
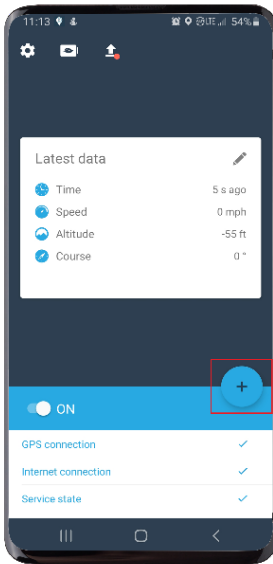
Once logged in, click the OFF switch to turn tracking ON. The system will ask for app permissions, select allow for all.



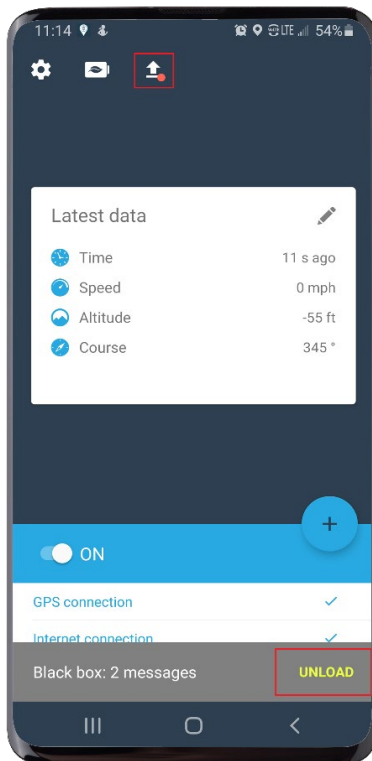
The device is now tracking.

ADDITIONAL SEND FEATURES

To manually send a Position or a Photo to the platform, click the “+” button.



Report messages are saved to the “Black box” until they are ready to be sent based on automated parameters. To manually send, click the **UP** arrow button at the top of the screen, and then select **UNLOAD** when prompted.



SETTINGS

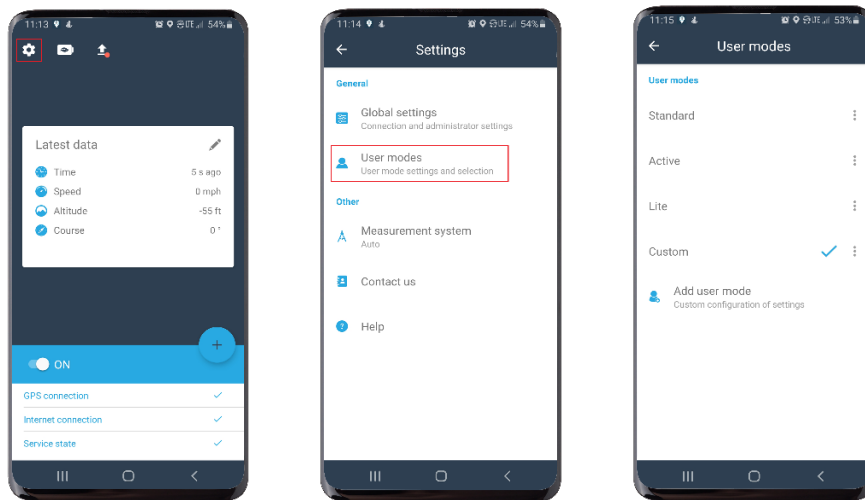
Click on the gear in the top left-hand corner to get to additional settings. To change the reporting interval mode, select "User Mode".

Active = High battery and data consumption, high accuracy, Continuous data collection, and sending.

Standard = Detailed track, 5 minutes delay, Smart data collection, sends data in bulk every 5 minutes.

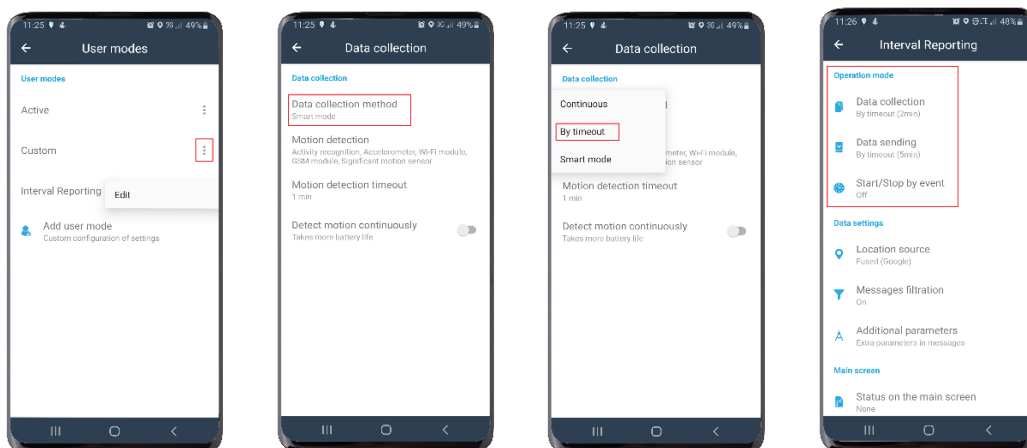
Lite = 5 minutes data collection and 5 minutes timeout.

Custom = custom mode settings have standard values and can be changed independently in accordance with the monitoring objectives.



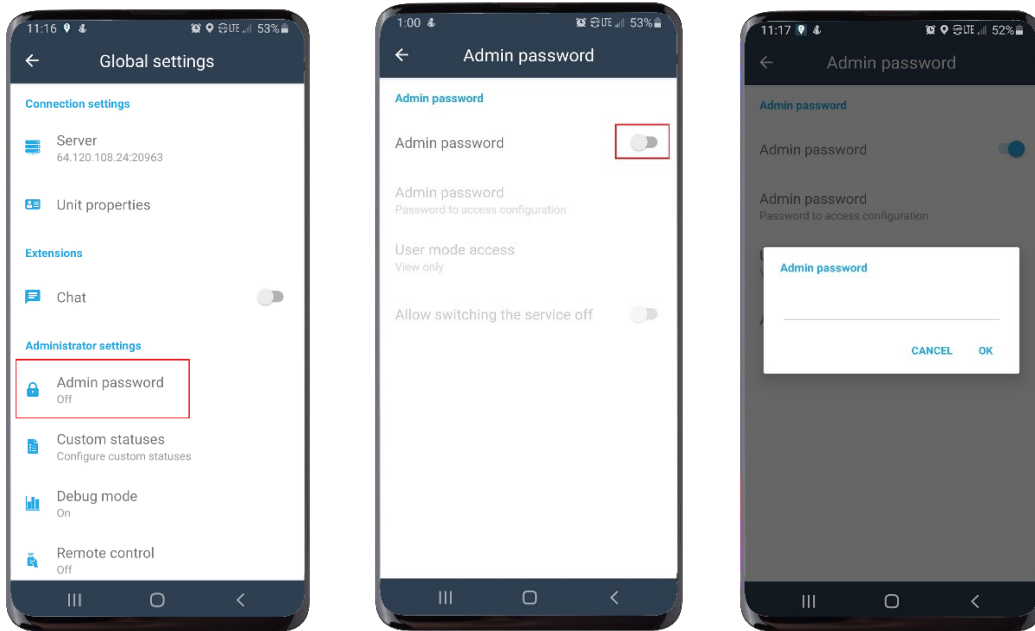
Creating a custom user mode:

- ⇒ Data collection – position / speed is recorded.
- ⇒ Data sending – Messages sent to platform.
- ⇒ Start / Stop events – Auto at restart, only when charging.

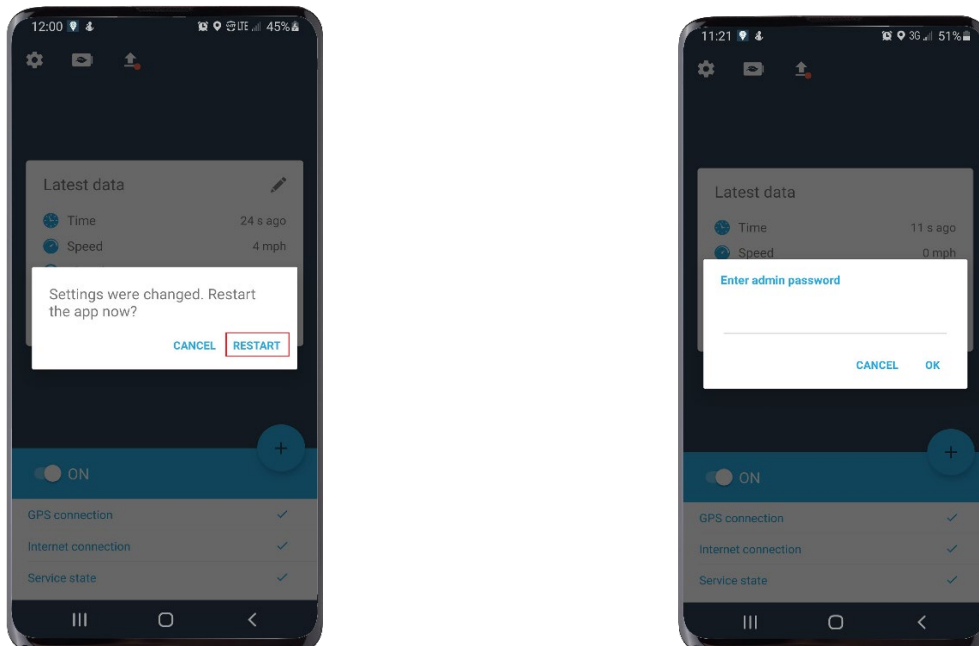


CREATE ADMIN PASSWORD

In Global Settings click on **ADMIN PASSWORD**. Admin password allows the device On / Off and admin features to be accessible only by a master password.

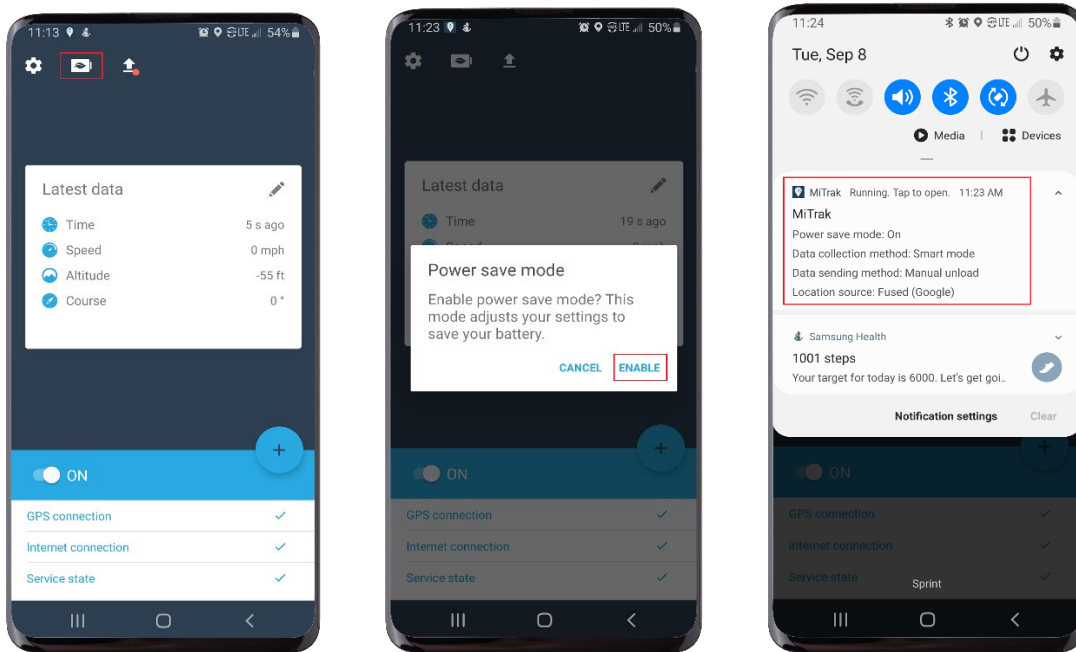


After making changes you may be required to restart app. Select restart. Once password is enabled, it will be required to make changes such as turning on or off GPS function.



POWER SAVE MODE

Power save mode disables sending messages to the platform; however, the device is still collecting data. Power save mode is on, and now messages are only saved to the black box.



MiTrak runs as a service in the background, so the mobile device can continue to be used.