



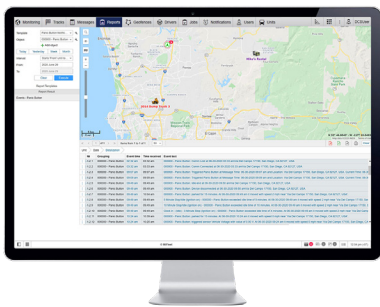
SOLUTION INCLUDES:

- MF2630 LTE GPS Device
- Panic Button
- Wiring Harness

Driver Panic Button for Safety & Security

At MiFleet, driver safety is our number one concern. The Panic Button is an easy-to-use accessory that allows drivers to alert fleet managers in the event of an emergency. Drivers are often placed in a vulnerable positions due to driving alone and in areas that may present an emergency. Fleet managers need to be aware of the tools that can protect their drivers and minimize risk.

Panic buttons are an easy to use accessory which gives the driver the ability to alert dispatch managers in the event a driver is unable to access a mobile phone. Buttons can be installed in a concealed location, giving access to the driver, but go unnoticed to others when the button is pressed.



MiFleet Panic Button solution provides ultimate safety for your drivers.

For pricing and more information contact
sales@mifleet.us.



SoS Emergency Alerts

With the press of a button, your dispatcher can be alerted if a vehicle and driver is faced with an emergency situation. Vehicle GPS location and time are recorded and available for review in the MiFleet application.



Covert Communication

The Panic Button can be covertly installed in the vehicle in the event a driver is unable to gain access to a mobile phone. The button can be installed in any new vehicle or existing vehicle with a MF2630 GPS Device.



Enhanced Notifications

MiFleet is designed to broadcast SMS or Email notifications when a driver pushes the panic button, sending GPS coordinates and vehicle information directly to any mobile device.



Insurance Policy

The panic button is a simple add-on that enables piece of mind and is like an insurance policy – its there when your drivers need it.



Plug'n Play

Existing MiFleet MF2630 GPS Device owners can simply add-on the Panic Button accessory to their existing installation with ease.