

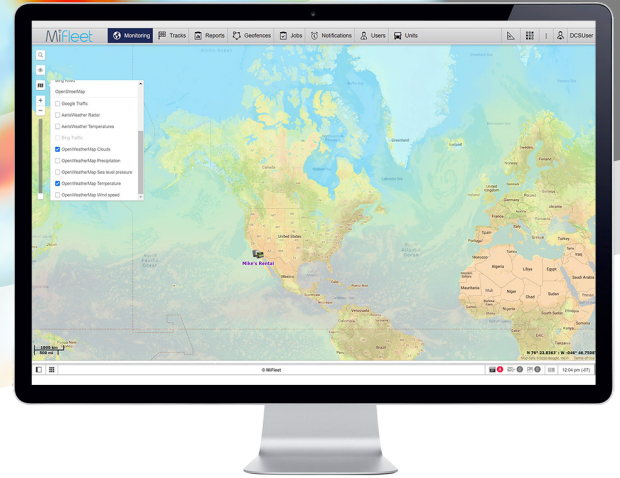
Feels Like: **-22°**  
Winds: **E 6**

Humidity: **61%**  
Visibility: **10km**

10:00

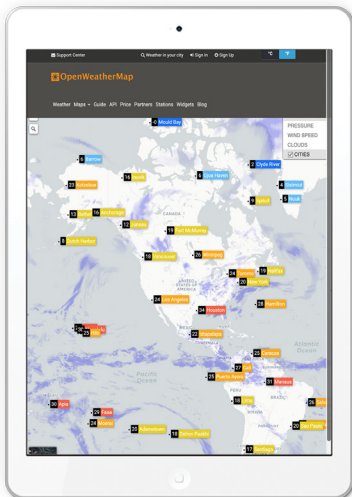
## FEATURES

- GRAPHIC OVERLAYS
- CURRENT WEATHER
- ROUTE CONDITIONS
- PRECIPITATION MOVEMENT
- TEMPERATURE
- WIND SPEED



## MiFleet Weather Monitoring

Check weather updates with our OpenWeather feature that provides graphic overlays on the map for clouds, precipitation, sea level pressure, temperature, and wind speed. Manage deliveries with confidence by using tools that help you route accordingly.



MiFleet OpenWeather solution provides real-time accurate weather reporting. Contact [sales@mifleet.us](mailto:sales@mifleet.us) for more information.



### Identify Severe Weather

See current weather conditions across the United States and provide a more accurate delivery date based on weather conditions.



### Keep Employees Safe

Review the forecast and know how weather conditions evolve over your routes to keep your employees safer on the road and out of storms way.



### Save Time & Money

Get current up-to-date real-time weather conditions to be able to make better business decisions by understanding how weather conditions can affect your drivers.